



Technology for Life Science

Handheld Retinal Camera
Kowa

GENESIS-DTM
Series

Discover Kowa's mobile retinal cameras!



GENESIS-DTM
(for color retinal photography)

NEW



FA mode
available now!

GENESIS-DTM f
(for color and FA retinal photography)



Technology for Life Science

Handheld Retinal Camera Kowa GENESIS™-D Series

A series of handheld retinal cameras made of Kowa's technology.

The best choice to start fundus photography!

● ID input

● Integrated with a 2 megapixel digital camera

● One-handed focusing and shooting operations

● Power supply unit which is used also as a camera holder

GENESIS-D For color retinal photography

NEW

GENESIS-Df For color and FA retinal photography

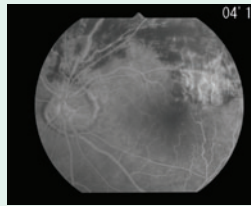
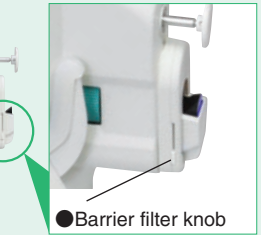
One-handed easy shooting

● Focusing knob (on both sides)

● Shutter button (on both sides)



Timer display when saving FA images



Options for a more extended use

Digital Imaging System



"Kowa VK-2" Digital imaging system can be connected with "GENESIS-D" series and capturing images!



USB

Indirect lens holder

Indirect lens holder (for +28D aspherical lens)

Indirect lens holder (for +60D, +90D aspherical lenses)



*Aspherical lenses are not included.

Trunk Case



Foot Switch



Specifications

Photographic modes	GENESIS-D : COLOR GENESIS-Df: COLOR / FA
Angle of field	Horizontal 30° / Vertical 25°
Working distance	5mm (between the top of cornea of examined eye and prism)
Effective dioptric range of focusing	-15D ~ +35D
Range of eyepiece correction	-8D ~ +5D
Illumination for observation	GENESIS-D: white LED GENESIS-Df: white LED / blue LED
Illumination for shooting	Xenon flash lamp / LED
Filter (GENESIS-Df only)	Exciter filter, barrier filter (manual insertion)
Data recording (GENESIS-Df only)	Timer
Image sensor	2 megapixel CCD

Monitor	2.5 inch TFT LCD monitor
Record media	CompactFlash® (TYPE I)
Image format	3 types of image recording formats are selectable FINE / NORMAL (compressed JPEG format) RAW DATA (uncompressed BMP format)
Output terminal	USB (1.1) terminal (B connector) Foot Switch connector cable terminal
Power supply	Input: AC100V - AC240V 50/60Hz Power consumption: 60VA (GENESIS-D), 150VA (GENESIS-Df)
Dimensions / weight of the camera unit	74.5 (W) × 197 (D) × 278.5 (H) mm / 1070g (2.36lbs.)
Dimensions / weight of the power supply unit	180 (W) × 300 (D) × 230 (H) mm / 1930g (4.25lbs.)

※ Images of the monitor are compositions

※ GENESIS is a registered trademark of Kowa Company, Ltd. in the United States, Germany, Japan and other countries.

※ All other companies and product names stated here are trademark or registered trademark of each company.

※ Specifications and appearances are subject to change without notice.

Distribution name: KOWA GENESIS-D
Distribution name: KOWA GENESIS-Df



Kowa Kowa Company, Ltd.

World Sales Headquarters

4-14, Nihonbashi-honcho 3-chome, Chuo-ku, Tokyo 103-8433 Japan
Phone: 81(3)5623-8059 Facsimile: 81(3)5623-8060
URL: <http://www.kowa.co.jp/e-life/>

Hamamatsu Factory

3-1, Shinmiyakoda 1-chome, Kita-ku, Hamamatsu City, Shizuoka Pref., 431-2103 Japan

Kowa Europe GmbH

Immermannstrasse 43B
40210 Duesseldorf, F.R. Germany
Phone: 49(211)1793540
Facsimile: 49(211)161952
URL: <http://kowa-europe.com/>

Kowa Optimed, Inc.

20001 S. Vermont Ave.
Torrance, CA 90502, U.S.A.
Phone: 1(310)327-1913
Facsimile: 1(310)327-4177
URL: <http://kowa-usa.com/>



Tel: (004) 0720549186
Fax: (004) 0213239279
contact@e-biotec.ro
www.e-biotec.ro



This catalog was made with recycled paper. Printed in Japan K9L51/51B_0999200K